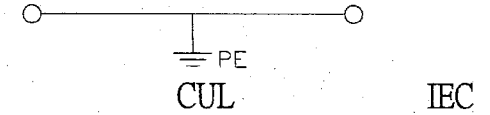
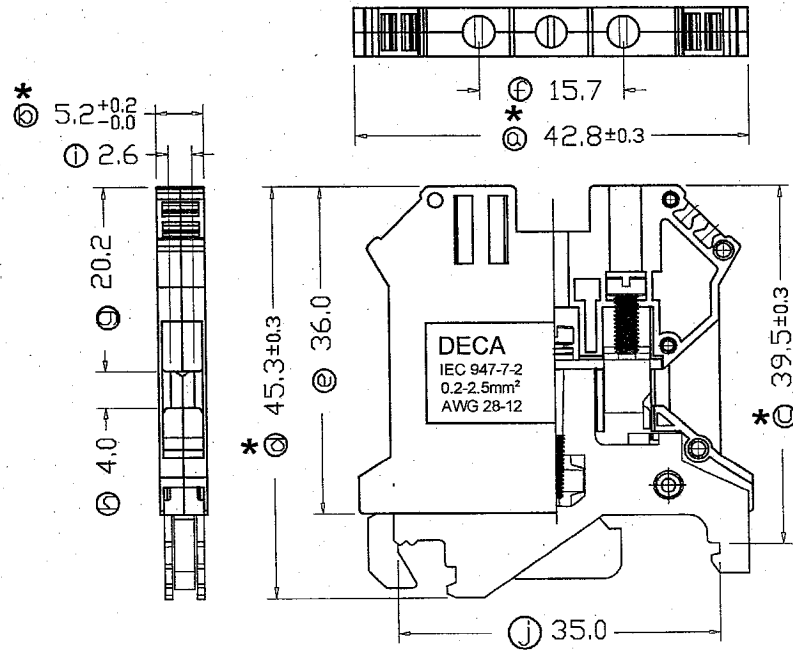


# CPE2.5N-SZ

CE RoHS Compliant



Solid wire	22~12 AWG	0.2~2.5mm <sup>2</sup>
Stranded wire	22~12 AWG	0.2~2.5mm <sup>2</sup>
Torque	0.46~0.6Nm	4~5.2lb-in
Insulating withstand voltage	2500V AC , 1minute	
Screw	M2.6	
Wire strip length	8~10mm	
Mounting Rail	TS35x7.5/TS35x15/TS32	

CONFIRMED & ACCEPTED BY

	Material	Plating/Finish	Remark
1	Insulating body PA66 (UL94 V-0)		Green-Yellow
2	Terminal Copper	Tin plated	
3	Cage clamp Steel	Zinc	
4	Screw 1 Steel M2.6	Zinc	
5	Screw 2 Steel M2.6	Zinc	
6	Contact piece of 1 Brass	Tin plated	
7	Contact piece of 2 Steel	Zinc	
8	Nut Steel	Zinc	

定案

A

REV.

文件管制  
NOV 25. 2014  
文管中心

**DECA** SwitchLab Inc.

DESIGN	CHECK	APPROVE
DATE	DATE	DATE
2014/11/25	2014/11/25	2014/11/25

PART NAME UNIT SCALE

Terminal Block MM 1:1

DRAWING NO. SHEET

CPE2.5N-SZ 1/1